

# A Primer for Every Job...

Recommended Applications	B-I-N	1-2-3	Cover-Stain	AllCoat
<b>INTERIOR SURFACES</b>				
Drywall	E	E	F	E
Plaster (1)	G	E	G	E
Limewash/Lime Plaster	NRENRE			
New Wood Trim/Doors	E	G	F	E
Plywood	G	G	F	E
Brick	NRENRR			
Concrete (1)	G	E	G	G
Galvanised New (3)/Old	NRENRG			
Aluminium/Stainless Steel	G	E	G	G
Plastisol®	E	E	F	E
Fibreglass/GRP	NRENRR			
Glossy Paints/Glass	E	E	F	E
Varnish/Woodstain	ENRRNR			
Clear Finishes	E	G	G	G
Wood Panelling/Laminates	E	G	G	G
Ceramic Tile	G	E	G	G
Formica®	E	G	G	G
Wallcovering (non porous)	E	E	F	E
Powder Coatings	E	E	F	E
Acoustic Tiles	NREE			
<b>EXTERIOR SURFACES</b>				
Cedar & Redwood	*	G	F	*
Plywood	*	G	F	*
Pressure Treated Wood	*	E	F	*
Brick	*ENR*			
Concrete/Stucco	*	E	G	*
Glossy Paints/Glass	*	E	F	*
Galvanised New (3)/Old	*ENR*			
Aluminum/Stainless Steel	*	E	G	*
Wrought Iron/Cast Iron/Copper	*NRE*			
Lead/Asbestos	*ENR*			
PVC	*	E	G	*
Powder Coatings	*	E	F	*
<b>STAINS &amp; ODOURS</b>				
Tannin Bleed	E*NREE*			
Knots & Sap	E*NRNRNR			
Rust	E*EGG*			
Smoke & Fire Damage	E*NREE*			
Water Damage	E*NREE*			
Nicotine/Tobacco	GNREE*			
Mildew/Mould Stains (2)	E*NREE*			
Pet Stains	E*NREE*			
Asphalt/Grease	E*ENRRR			
Tar/Bitumen	NRENRRR			
Creosote	E*GNRRR			
Odour Sealing	E*NRNRNR			
Lipstick/Crayon	E*EGG*			

E=Excellent (best recommendation)  
G=Good (may be used on this surface)  
NR=Not Recommended

NOTES: \* Use B-I-N for spot priming on exterior surfaces  
1) Allow new plaster/cement & stucco to cure 60-90 days before coating.  
2) Use Blackfriar Fungicidal Wash to remove mould/mildew before priming.  
3) Degrease new galvanised steel with methylated spirit before priming.

READ INSTRUCTIONS ON PRODUCT CONTAINER FOR FURTHER INFORMATION

## Other ZINSSER Problem Solvers...



### Bulls Eye 1-2-3® All Surface, All Purpose Water-Base Primer

- Great hide
  - Great adhesion without sanding
  - Superior stain blocking
  - Mould & mildew resistant film
  - Great for high pH surfaces
  - Great under or over any paint
  - Fast 1 hour recoat time
- \* Available in Bulls Eye® 1-2-3 DEEP TINT formula to improve coverage of deep colour topcoats



### B-I-N® The Ultimate Performance Shellac-Base Primer-Sealer

- The ultimate stain killer – blocks stains from water, smoke, fire damage and more
  - The ultimate new wood sealer- seals knots & sap streaks
  - Blocks odours permanently and completely
  - Sticks to glass, metal, tile and other glossy surfaces without sanding
  - Lightning fast dry – recoat in 45 minutes
  - Great under or over any topcoat
- \* Available in handy 390ml aerosol



### COVER STAIN® Oil-Base Primer-Sealer Stain Killer Bond Coat

- Interior and exterior
  - Blocks cedar & redwood bleed
  - Use for fire, smoke & water damage
  - Sticks to all surfaces without sanding
  - Fast drying – recoat in 2 hours
- \* 350 VOC Formula



### Allcoat Stain Killer Multi-Surface Primer & Finish

- High Hiding Stain Blocker
- Oil performance without the odour
- Kills stains from water, graffiti, ink, crayon
- Sticks to all surfaces without sanding
- Non-yellowing, dries flat, sands easily
- Dries in 30 minutes. Recoat in 2 hours



# COVER-STAIN® All Surface • All Purpose Oil-Base Primer-Sealer Stain Killer



Interior & exterior  
Great exterior wood sealer  
Blocks cedar & redwood bleed  
Seals water, smoke & nicotine stains  
Sticks to all surfaces without sanding  
Ready to recoat in 2 hours  
Available in a handy 390ml aerosol



www.zinsseruk.com

An RPM Company



# The Oil-Base Primer That's Great for Any Surface!



## Great for All Interior Surfaces...

Fast-drying, oil-base COVER-STAIN, is great for priming new and previously painted interior surfaces – panelling, wood trim, old wallcovering, glossy paints, clear finishes, Formica®, and more. Ready to recoat in just 2 hours, it seals porous surfaces - plaster, bare wood, masonry, previously coated drywall - to give topcoats better coverage and sheen. This heavy-duty professional formula is tintable and compatible with any oil or latex-base topcoat. And, COVER-STAIN blocks tough stains from water, fire, smoke & nicotine and sticks to all surfaces, including metal and glossy finishes, without sanding.

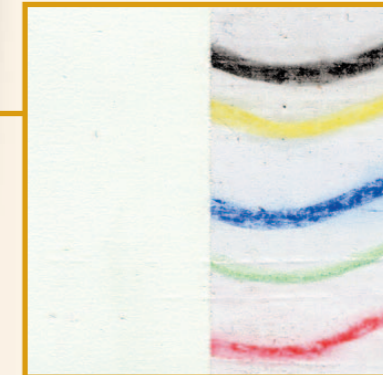
## ...And All Exterior Surfaces!

COVER-STAIN has excellent penetration making it great for full surface exterior priming on siding, shutters, soffits, trim, doors, windows, metal, cured masonry and more! The high performance formula prevents cracking, peeling, chalking and blistering. It blocks and seals stains from graffiti, rust, water and mildew. And it's a great sealer for exterior wood. COVER-STAIN seals all types of wood – new, weathered, plywood, T1-11 – and blocks tough cedar & redwood tannin bleed.



## Blocks Smoke & Nicotine Stains

COVER-STAIN permanently blocks stubborn stains from smoke, soot and nicotine. A great choice for restoration contractors, it seals smoke and soot residue from fireplaces, furnace puff-backs and house fires. It also hides the yellow-brown residue from nicotine stains and prevents bleed through.



## Covers the Toughest Stains

Water-soluble stains from water, graffiti, crayon, ink, mildew and rust cannot compete with the stain killing power of COVER-STAIN. The high-hiding, oil-base formula effectively seals and blocks difficult-to-coat stains – even stains that bleed through ordinary primers.



## Seals Porous Surfaces

COVER-STAIN seals porous surfaces like bare plaster, drywall, masonry, wood and filler. Great for wood siding, trim, panelling and unfinished furniture, and it helps bind chalky and previously painted surfaces. COVER-STAIN creates a smooth, easy-to-sand film that helps give topcoats better coverage and more uniform sheen.



## Outstanding Adhesion

Professionals know COVER-STAIN offers outstanding adhesion. It sticks to all surfaces – even hard-to-paint surfaces like glossy enamel paint and varnishes, Formica®, ceramic tile, PVC, weathered wood – even glass – without sanding or deglossing. It's a great base coat for metal cabinets and bookcases, panelling, tile and other surfaces when an oil-base primer is desired.



## Excellent Tannin Blocker

COVER-STAIN seals and binds wood fibres and blocks cedar & redwood tannin bleed. Great for rough siding, trim, shingles, shutters and other wood surfaces – the oil-base formula prevents tannin from bleeding through the topcoat and damaging the surface.



## Traditional Enamel Undercoat

COVER-STAIN brushes evenly, levels quickly and sands easily to create a glassy smooth enamel undercoat for oil-base and latex-base enamel paints. Because it dries to the touch in 30 minutes, is ready to recoat in 2 hours and sticks to glossy surfaces without sanding, COVER-STAIN saves time on the job.



## Exceptional Hide

Dark and vibrant colours are no match for COVER-STAIN. It hides even the darkest colours and busiest wallpaper patterns and prevents them from showing through your new topcoat.

**GENERIC TYPE:**  
Solvent base alkyd primer sealer, stain killer & bond coat

**RECOMMENDED FOR:**  
Interior

New or previously painted drywall, cured plaster and cement-based coatings, wood (including pine, fir, cedar, redwood, plywood), metal (including aluminium, iron, steel, and copper), vinyl, PVC, fibreglass, masonry (including stucco, concrete block, poured concrete, and brick).

**Exterior**

New or previously painted wood (including pine, fir, cedar, redwood, and pressure-treated wood), hard-board, metal (including aluminium, iron, steel and copper), vinyl, PVC, fibreglass.

**APPLICATION DATA:**

Brush, roller or pad:

Natural or Synthetic (nylon, polyester or blend)

Airless Spray:

.015" – .017" tip @ 1800 – 2200 psi

Practical Spread Rate:

9.8 m<sup>2</sup> per litre

Application Conditions:

5° – 32°C / <85% RH

Dry Time (24°C / 50%RH):

Touch: 30 min.

Recoat: 2 hours

Stain sealing: 2 hours

Full scrape cure: 4 – 7 days

Tinting:

Up to 16ml universal colourant per litre

**CLEANUP:**

Clean application tools immediately after use with white spirit. Follow manufacturer's instructions when cleaning spray equipment.

**TECHNICAL DATA:**

Percent solids, weight: 67.2%

Percent Solids, volume: 42.5%

Density: 1.3 kg/l

Viscosity Range: 55 – 65 KU

Theoretical Spread Rate

@ 1 mm DFT: 16.6 m<sup>2</sup>/l

Dry Time @ 24°C/50% RH: Touch: 35 min

Recoat: 1 hour

Stain Sealing

@ 24°C/50% RH: 1 hour

Adhesion Cure

@ 24°C/50% RH: 4 – 7 days

Gloss @ 60°/7 day cure: 3.6

Cured Enamel holdout: 3.0% gloss chg

Cured Wet adhesion: Pass 2000 cycles

Flexibility/7 day cure

(3/8" Mandrel): No cracks - pass

Flame spread

(ASTM-84-97A): Class 1

Smoke contribution

(ASTM-84-97A): Class 1

Flash Point

(ASTM D3278): 28°C

MAX VOC: 350 g/l

Freeze/thaw stable: Yes

Shelf Life: 60 mths @ 24°C

Storage/Handling: Store indoors 4° – 32°C

**LIMITATIONS:**

Not recommended for floors or decks or surfaces subject to immersion or prolonged contact with water. These limitations are not to be construed as all-inclusive.